

Health in the South West

Across the country, the NHS has performed well over the past year. This document provides a brief summary of the performance of the health services in the South West of England and progress in implementing the Government's reforms.

Across the South West the NHS has maintained a strong performance through transition. Reform of the local public health system is on track for the formal transfer of public health responsibilities to local authorities from April 2013. Twelve clinical commissioning groups have been established and are operating in shadow form in 2012/13 with day-to-day responsibilities for commissioning delegated from primary care trust (PCT) clusters. Performance has further improved in 2011/12, achieving above national standards in ambulance response times, 18 week referral to treatment times and 4-hour waits in accident and emergency (A&E) departments. MRSA infections were 18 percent lower than the maximum target of 118 and the number of cases of clostridium difficile (2,158 in 2011/12) fell slightly compared to the previous year. There are 10 non foundation trusts (FT) in the South West; all are making good progress in their transactions or FT journey.

Performance

Waiting times

- 92.2 percent of patients admitted to hospital seen within 18 weeks (operational standard: 90 percent within 18 weeks).
- 97.7 percent of patients treated by, but not admitted to, hospital seen within 18 weeks (operational standard: 95 percent within 18 weeks).
- 91.8 percent of patients on waiting list have been waiting less than 18 weeks (operational standard: 92 percent within 18 weeks).

A&E

96.2 percent of patients were admitted, transferred or discharged within 4 hours of their arrival at an A&E department in Q4 2011/12 (operational standard: 95 percent within 4 hours).

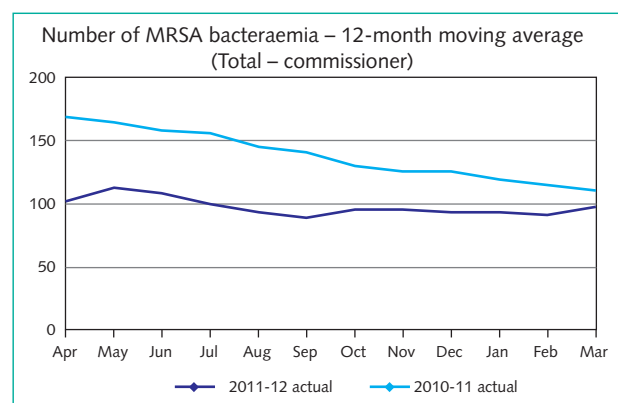
Ambulance response times

In 2011/12 South Western Ambulance Service NHS Foundation Trust performance against the Category A response time standard within 8 minutes was 76.1 percent and on Category A transportation

standard of 19 minutes was 95.8 percent. In 2011/12 Great Western Ambulance Service NHS Trust performance against the Category A response time standard within 8 minutes was 75.6 percent and on Category A transportation standard of 19 minutes was 96.8 percent (operational standards: 75 percent within 8 minutes and 95 percent within 19 minutes).

Healthcare associated infections

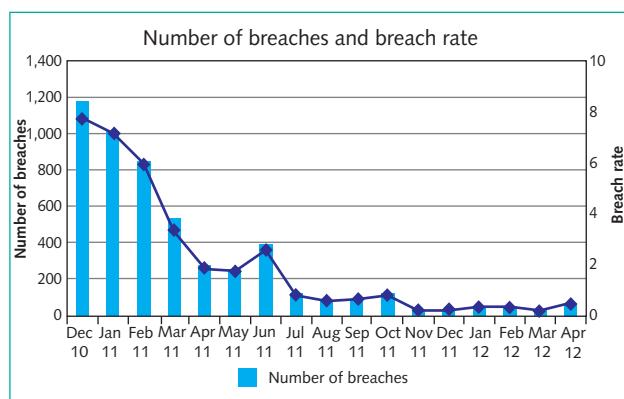
MRSA: Numbers of bacteraemia fell from 109 in 2010/11 to 97 in 2011/12, a fall of 11 percent.



C.Difficile: Numbers of infections fell from 2,246 in 2010/11 to 2,158 in 2011/12, a fall of 4 percent.

Mixed sex accommodation

There were 34 breaches of requirements related to mixed sex accommodation in the South West in March 2012. This was in line with the significant 97 percent reduction seen nationally since records began.



Outcomes in the South West

The NHS is moving away from input targets and measures, to a focus on delivering the best possible outcomes. A draft mandate for the NHS Commissioning Board is being consulted on, and it sets out a clear focus on five key outcomes based on the NHS Outcomes Framework to be achieved for patients:

- Preventing people from dying prematurely
- Enhancing quality of life for people with long-term conditions
- Helping people to recover from episodes of illness or following injury
- Ensuring people have a positive experience of care
- Treating and caring for people in a safe environment and protecting them from avoidable harm.

In 2011/12, the South West average of inpatient experience scores was 77, compared to an England average score of 75.6.

In 2010, the infant mortality rate for South West was 3.4 per 1000 live births, compared to an England rate of 4.2 per 1000 live births.

Health in the South West

Cancer

The death rate from cancer is 7 percent lower in South West than it is across England (2010 data).

Myocardial infarction (heart attack)

The death rate from myocardial infarction is 20 percent lower in South West than it is across England (2008-10 pooled data).

Smoking rates

The smoking rate among adults is lower in the South West (19.3 percent) than it is across England (20.2 percent). 35,000 smokers quit through the NHS Stop Smoking Services in the South West in 2011, 4 percent up on the comparable figure for 2010.

Finance

The Government will increase health spending in real terms in each year of the Parliament, providing total funding growth of £12.5bn by 2014/15.

Total expenditure in SHA and PCTs in South West	
2011/12 Final accounts	£9,073m
2012/13 Plan	£9,234m
2011/12 Final accounts surplus	
SHA & PCTs	£177m
Trusts	£30m
2012/13 Planned surplus	
SHA & PCTs	£108m
Trusts	£28m
PCT QIPP delivery	
2011/12 Final accounts	£483m

We expect resource allocations for local authorities and clinical commissioning groups to be confirmed by the end of 2012.

Transition to the new health system

The new health and care system places patients and public firmly at its centre. It gives greater freedom to providers of local services to innovate and improve the quality of care and gives real choice to patients.

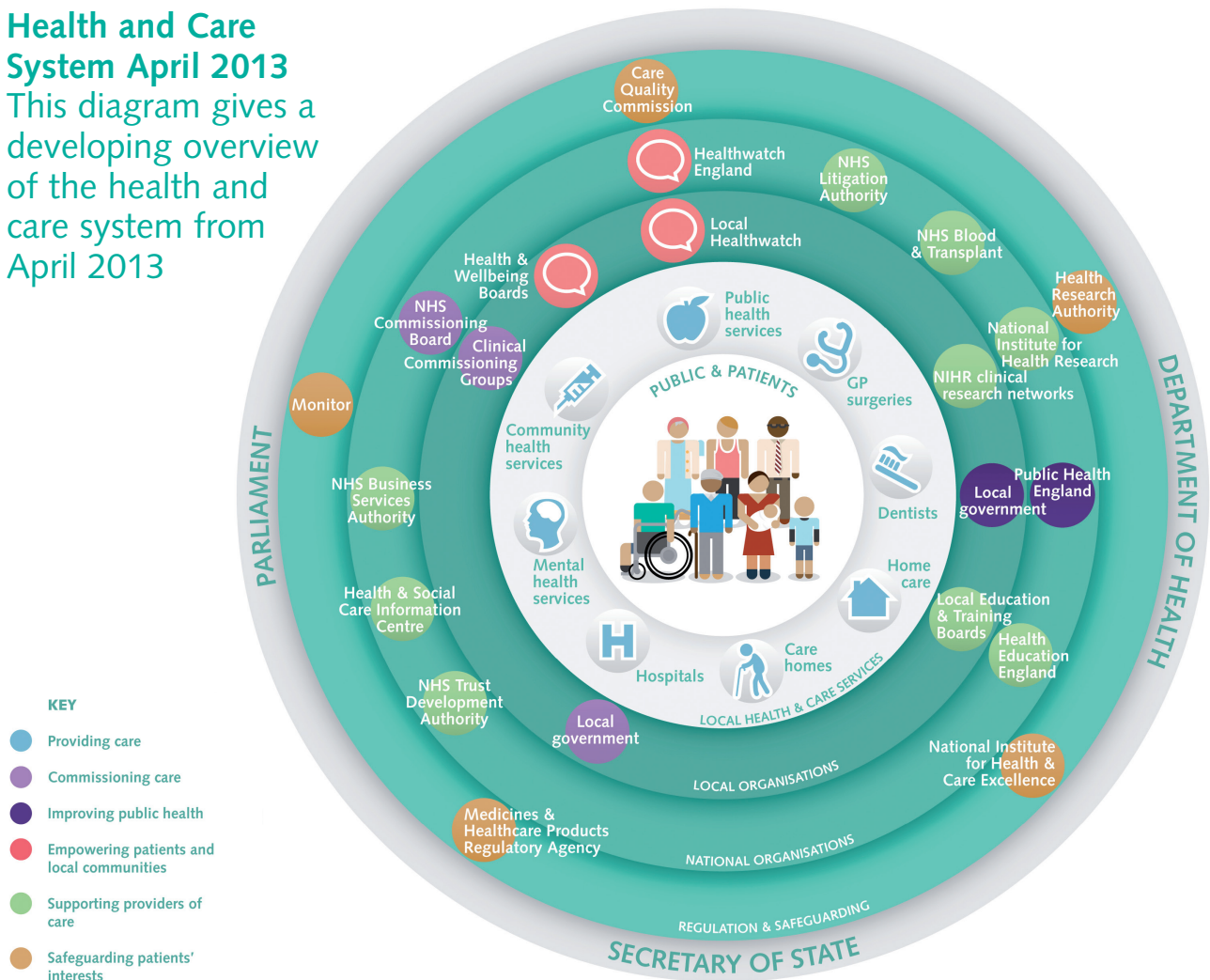
It places clinical leadership in charge of commissioning decisions and strengthens local accountability through local government, with the creation of health and wellbeing boards.

This local infrastructure will be supported by new national bodies, such as the NHS Commissioning Board, Public Health England, Health Education England, and others.

Effective and transparent regulation will help to maintain public trust in the system, while Secretary of State and Parliament maintain ultimate accountability.

Health and Care System April 2013

This diagram gives a developing overview of the health and care system from April 2013



Clinical commissioning groups

The map below shows the clinical commissioning groups (CCGs) in this region. The colour coding indicates the wave in which their application for authorisation will be considered by the NHS Commissioning Board Authority:

- Wave 1: June 2012 to October 2012
- Wave 2: July 2012 to November 2012
- Wave 3: September 2012 to December 2012
- Wave 4: October 2012 to January 2013

Local contact for the NHS Commissioning Board Authority

The Regional Director for NHS Commissioning Board Authority is Andrea Young. She can be contacted on email at andrea.young@southcentral.nhs.uk or by telephone on 01635 275617.

Health and wellbeing boards

Shadow health and wellbeing boards are now in place across the country. The boards take on their statutory functions as of 1 April 2013.

